

## Following Accessories can be supplied with our Pressure Gauges:

### Syphon:

#### APPLICATION:

Pressure gauge syphons are intended to protect the pressure gauge from the effect of hot pressure media such as steam and also to reduce the effect of rapid pressure surges. Condensate of the pressure medium that is collected inside of the coiled or U-shaped portion of the syphon prevents direct contact. When first installed the syphon should be filled with water or any other suitable separating liquid.

#### TECHNICAL SPECIFICATION:

<b>Material</b>	Carbon steel, SS304/SS316
<b>Size</b>	1/4" to 1/2" pipe, sch 40, 80, 120
<b>Type</b>	Q type, O type, U type and Straight U typ

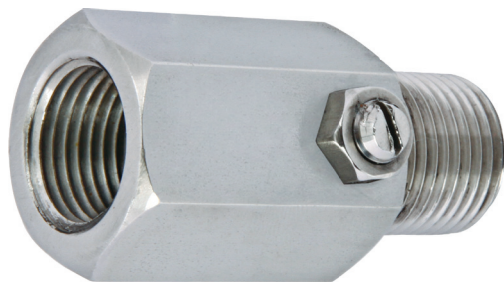


### Snubbers:

#### APPLICATION:

Pressure gauge snubbers are intended to suppress the effect of pressure pulses and pressure peak. Snubbers will considerably increase the service life of pressure gauges in harsh applications such as on reciprocating pumps and compressors, Hydraulic pressure or fluid power systems and will additionally improve the reading accuracy of the gauge.

#### TECHNICAL SPECIFICATION:



<b>Material</b>	Carbon steel, SS304/SS316
<b>Type</b>	Porous type, Piston type and Adjustable type
<b>Pressure rating</b>	Porous / Piston type Max 15000psi
	for Adjustable type Max 5000psi

### Gauge Cock:

#### APPLICATION:

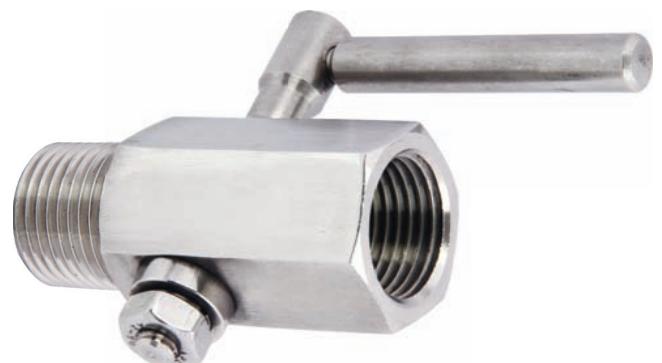
Gauge cock is used for flow control like simple ON/OFF, Isolation applications.

2 way gauge cock provides isolation of the instrument.

3 way gauge cock there is provision for isolation as well as vent (Drain)

#### TECHNICAL SPECIFICATION:

<b>Material</b>	Carbon steel, SS304/SS316
<b>Type</b>	2way / 3way gauge cock
<b>Pressure rating</b>	up to 30 Kg/cm <sup>2</sup> .



## Needle Valve:

### APPLICATION:

An instrument needle valve uses a tapered pin to gradually open space for the control of flow. The flow can be controlled and regulated with use of a spindle. A needle valve has a relatively small orifice with a long tapered seat, and a needle shaped plunger on the end of a screw, which exactly fits the seat.

### TECHNICAL SPECIFICATION:

<b>Material</b>	Carbon steel, SS304/SS316
<b>Type</b>	Ball valve, control valve, Gate valve & Plug valve
<b>Pressure rating</b>	Hard seat models 10,000 psi
	Soft seat models 6,000 psi



## Manifold:

### APPLICATION:

Manifolds are designed for application where direct mounting to an instrument is impractical or undesirable. The manifold is mounted to the lines from the instrument and signal rather than directly to instrument. These valves are built to perform under pressure and meet or exceed industry standard.

### TECHNICAL SPECIFICATION:

<b>Material</b>	SS304/SS316
<b>Type</b>	3 & 5 Way manifold



## Gauge Saver:

### APPLICATION:

This range of the product is widely used for protecting pressure gauge against the effect of the pressure exerted on pressure rating of gauge

### TECHNICAL SPECIFICATION:

<b>Material</b>	SS304/SS316
<b>Range</b>	Up to 400Kg/cm <sup>2</sup>