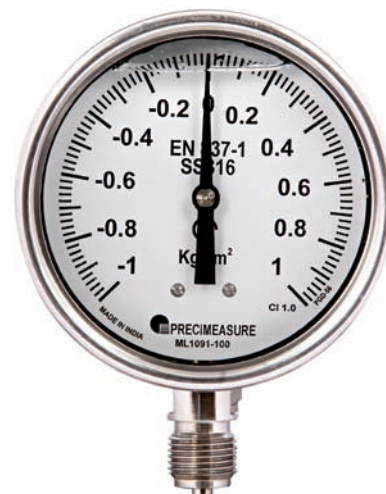


Compound Gauges:

Model No	1091-COMP-100 WC/EC	1091-COMP-150 WC/EC
Dial size	4"	6"
Accuracy	STD 1% of FSD	STD 1% of FSD

TECHNICAL SPECIFICATION:

Range	-1 to +24 Kg/cm ² .
Optional measuring units	PSI, bar, MPa, KPa
Wetted Parts	SS316, SS316L, Monel
Sensing Element	SS Bourdon / Monel
Over pressure protection	130% of FSD Optional 150% of FSD (For Short Duration of up to 1 minute)
Storage Temperature for Std Gauge	-40°C to + 70°C
Storage Temperature for Liquid-Filled Gauge	0°C to + 70°C
Operating Temperature of the Fluid under Pressure	-20°C to + 60°C
Contact Rating	Voltage Max 380V/Capacity = 30W - 50VA Max 1A



Vacuum Gauges:

Model No	1091-VPG-100 WC/EC	1091-VPG-150 WC/EC
Dial size	4"	6"
Accuracy	STD 1% of FSD Optional 0.5% of FSD	STD 1% of FSD Optional 0.5% of FSD

TECHNICAL SPECIFICATION:

Range	-760-0 mmHg Vacuum Optional-1 to 0Kg/cm ² , 30inHg to 0inHg
Optional measuring units	PSI, bar
Wetted Parts	SS316, SS316L,
Sensing Element	Bourdon / Diaphragm
Storage Temperature for Std Gauge	-40°C to + 70°C
Storage Temperature for Liquid-Filled Gauge	0°C to + 70°C
Operating Temperature of the Fluid under Pressure	-20°C to + 60°C
Contact Rating	Voltage Max 380V/Capacity = 30W - 50VA Max 1A

